



SUSTAINABLE ISLAND LIVING



SUSTAINABLE ISLAND LIVING

Take a good look at this island. What are some things you notice that might be different from where we live?



ENERGY

Can you spot how this place might be generating its own energy? What do you see?



TRANSPORTATION

Look at the ways people might be getting around. What modes of transportation do you think people living on the island are using?



FOOD PRODUCTION

Where do you think the people on this island get their food?



BUILDING & HOUSING

How do the homes and buildings here look different? What materials or designs are they using that helps the environment?



WATER USE

Water is precious. What are some ways this island might be using or saving water?



COMMUNITY AREAS

What kinds of community spaces or areas can you see? How do these spaces encourage a sustainable lifestyle?



SUSTAINABLE LIVING

*How could we apply some
of these sustainable
solutions in our own
community?*





PICTIONARY


OBJECTIVE

- Guess the sustainability- related term being drawn

RULES

- One student draws; others guess
- No letters, numbers or verbal hints
- Each round is 1 minute
- Correct guess = 1 point

WINNING

- The team with the most points at the end of the game wins!
- 



YOUR SUSTAINABLE ISLAND


OBJECTIVE

- Collaboratively design an island with sustainable practices

RULES

- Stay on topic
- Work with your team
- Stick to the time
- Your drawings don't need to be perfect, they just need to explain your ideas!

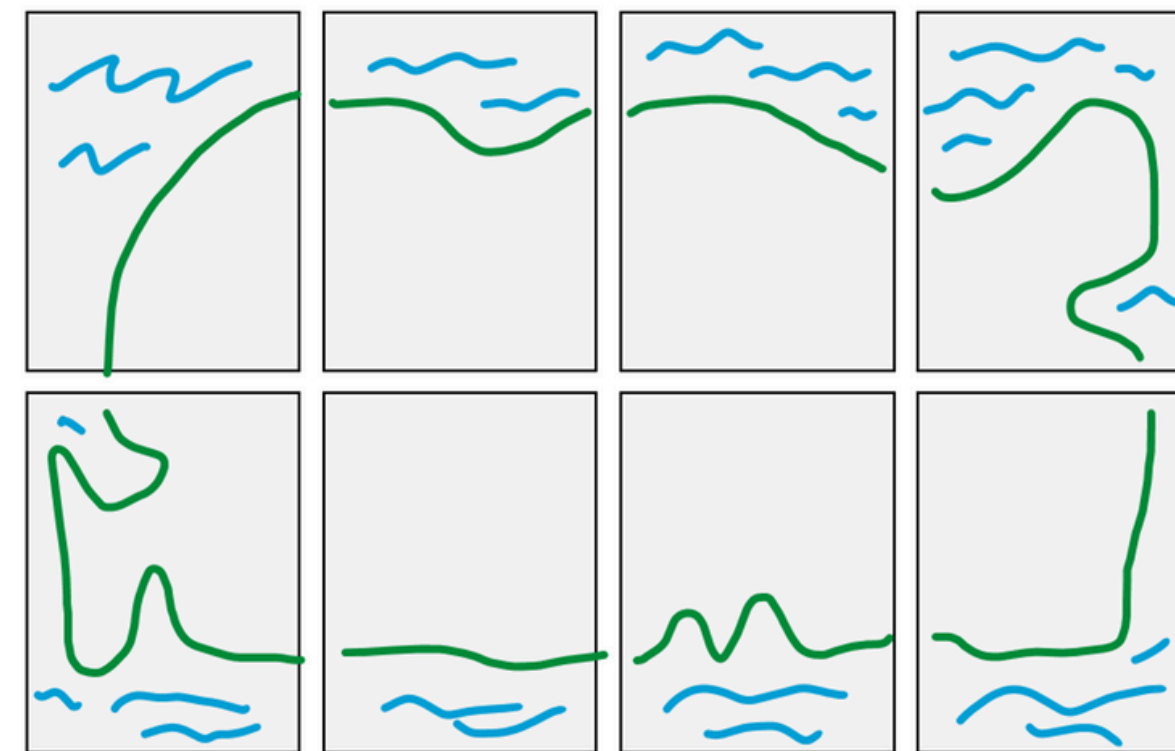
MISSION

- Form teams and assign roles
 - You have 10 minutes to draw your part of the island
 - Assemble the drawings to form one island!
- 

DESIGNING YOUR ISLAND:

STEP ONE

- Put your team's pieces of paper together and draw an island outline - just like this!
- It can be any shape you like



DESIGNING YOUR ISLAND:

STEP TWO

- Decide as a team on a cool name for your island
- You also need to decide what the weather and geography will be like.
 - Will it be hot or cold?
 - Mountains, woods or something else?



DESIGNING YOUR ISLAND:

STEP THREE

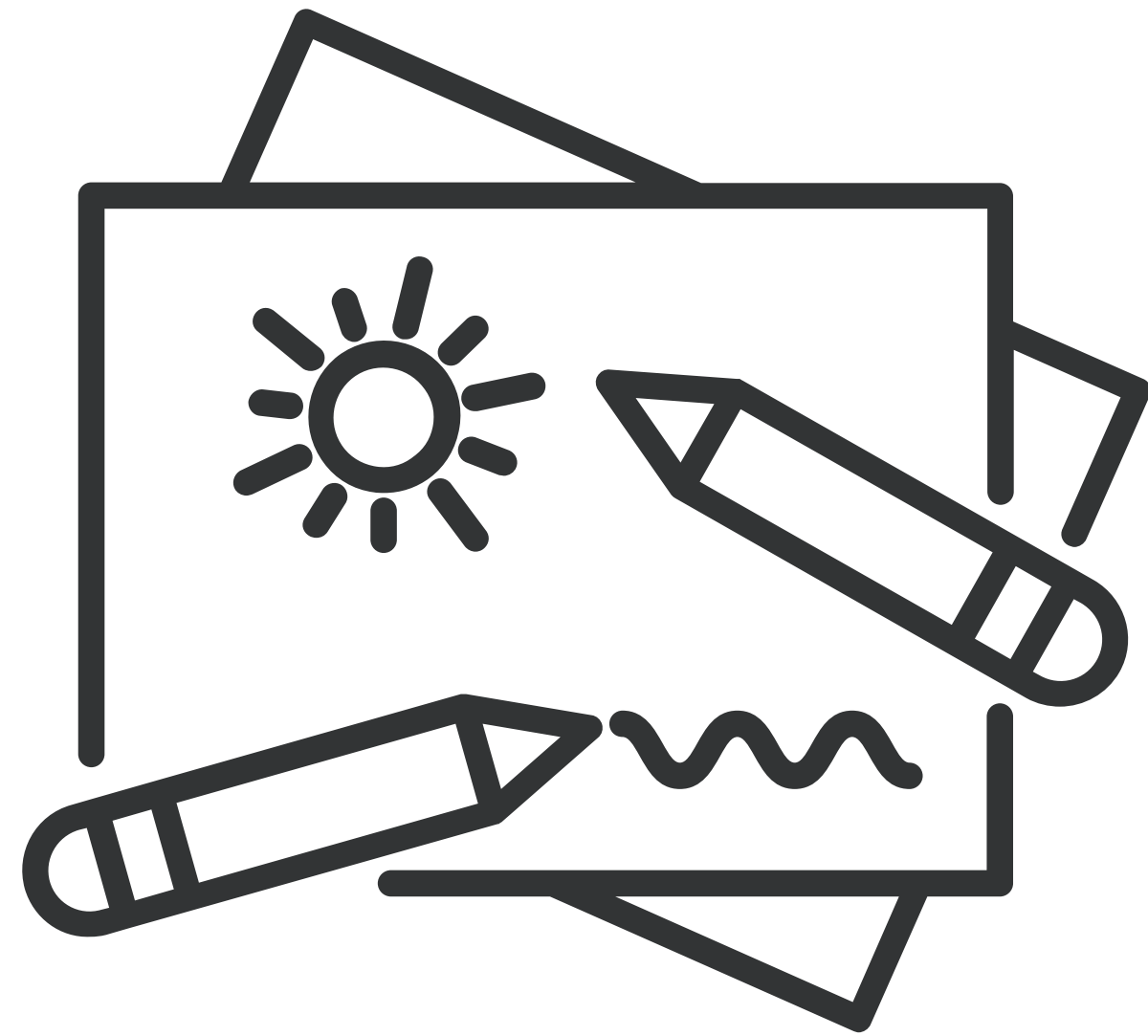
- Find out your special role
- You are the team expert on this topic!
- Decide what to draw on your part of the island that answers the questions on your role card



DESIGNING YOUR ISLAND:

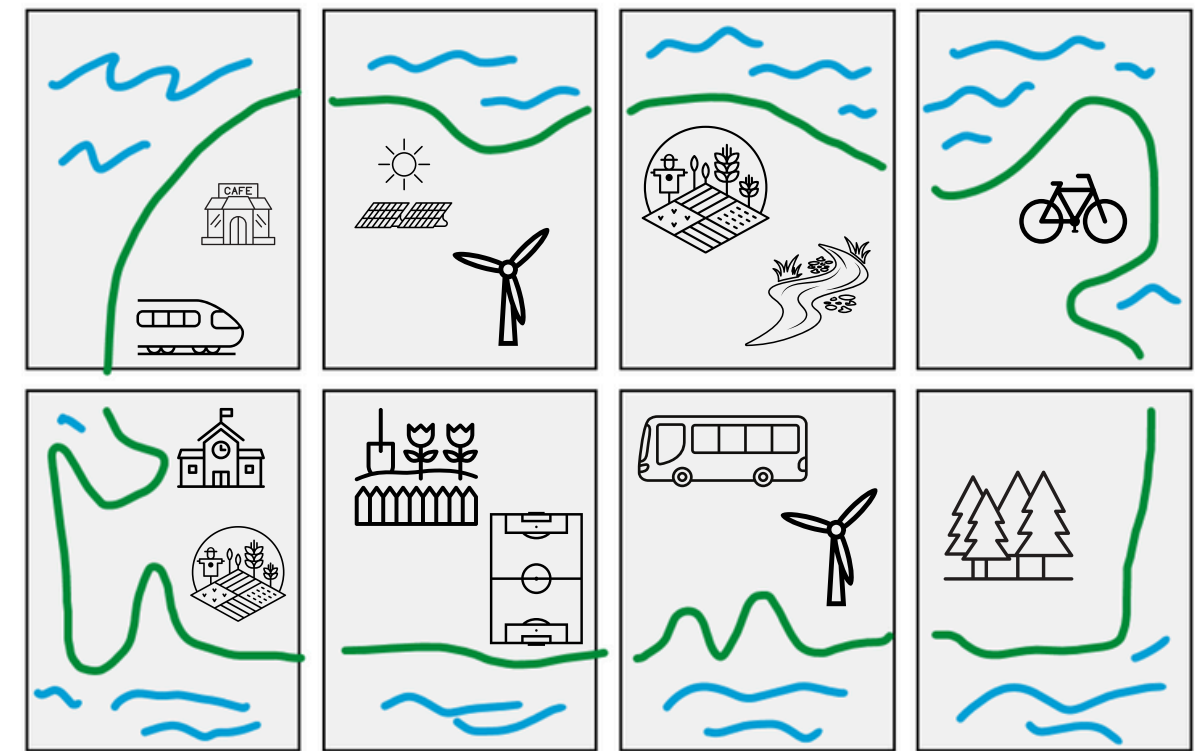
STEP FOUR

- Draw your part of the island
- Your drawings don't need to be perfect, they just need to explain your ideas!
- Extension: label your island's sustainable features



DESIGNING YOUR ISLAND: STEP FIVE

- Join all your team's drawings back up - just like this!
- Tell your team mates all about your part of the island



REFLECTION

How could we apply
some of these
sustainable solutions in
our own community?

